



CERTIFICATE OF ANALYSIS

Product	CINNAMON LEAF
Batch Number	4357104
Best Before End	APRIL 2022

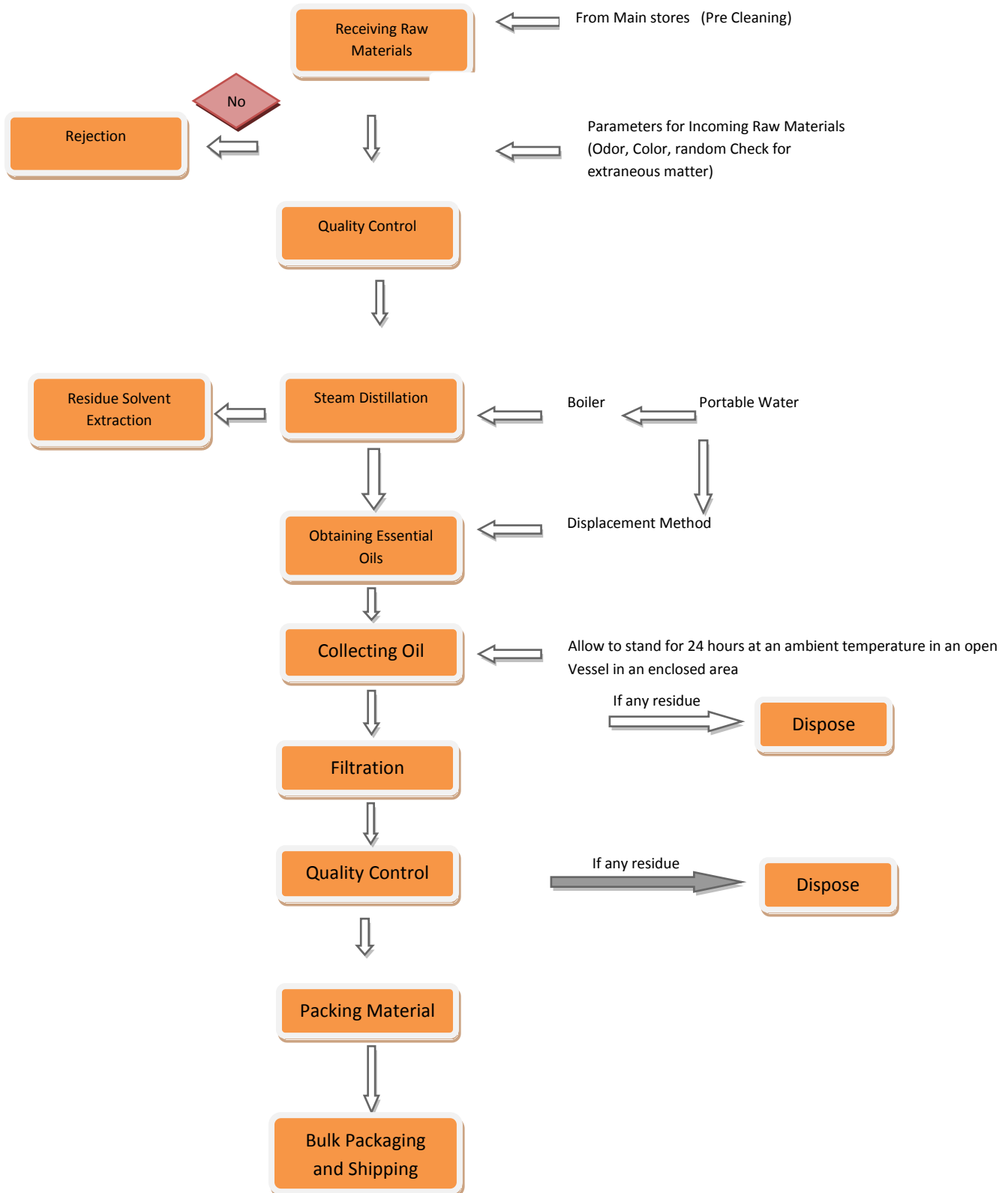
<u>DESCRIPTION</u>	<u>RESULT</u>
Optical Rotation @ 20°C	0.8000
Odour	Charcateristic
Specific Gravity @ 20°C	1.0472
Refractive Index @ 20°C	1.5340
GC	Match Standard
Appearance	Pale Yellow To Amber Liquid
Flash Point	88
Iron	< 10

ALLERGEN DECLARATION

We hereby confirm that the following item contains the ingredients listed below. Stated are the total levels added plus levels from natural ingredients. The information is supplied to enable compliance with the Seventh Amendment to the EU Cosmetics Directive (76/768/EEC) and the EU Detergents Directive (648/2004/EC).

CINNAMON LEAF OIL

Ingredient	CAS	EC	Concentration (%)
Benzyl Benzoate	120-51-4	204-402-9	3%
Cinnamal	104-55-2	203-213-9	3%
Cinnamyl Alcohol	104-54-1	203-212-3	1%
Eugenol	97-53-0	202-589-1	85%
Linalool	78-70-6	201-134-4	4%



IFRA CONFORMITY CERTIFICATE

Product: CINNAMON LEAF OIL

We certify that the above item is in compliance with the Standards of the INTERNATIONAL FRAGRANCE ASSOCIATION (IFRA - 48th Amendment / published June 2015), provided it is used in the following classes at a maximum concentration level of:

IFRA classes [see annex for detail]	Maximum level of use (%)
IFRA Class 1 Limit	0.24%
IFRA Class 2 Limit	0.24%
IFRA Class 3.A Limit	0.5%
IFRA Class 3.B Limit	0.5%
IFRA Class 3.C Limit	0.5%
IFRA Class 3.D Limit	0.5%
IFRA Class 4.A Limit	0.5%
IFRA Class 4.B Limit	0.5%
IFRA Class 4.C Limit	0.5%
IFRA Class 4.D Limit	0.5%
IFRA Class 5 Limit	0.5%
IFRA Class 6 Limit	0.5%
IFRA Class 7.A Limit	0.47%
IFRA Class 7.B Limit	0.47%
IFRA Class 8.A Limit	0.5%
IFRA Class 8.B Limit	0.5%
IFRA Class 9.A Limit	0.5%
IFRA Class 9.B Limit	0.5%
IFRA Class 9.C Limit	0.5%
IFRA Class 10.A Limit	0.5%
IFRA Class 10.B Limit	0.5%
IFRA Class 11 Limit	0.5%

IFRA CONFORMITY CERTIFICATE

For other kinds of application or use at higher concentration levels, a new evaluation may be needed; please contact MADAR Corporation Ltd.

The IFRA Standards regarding use restrictions are based on safety assessments by the Panel of Experts of the RESEARCH INSTITUTE FOR FRAGRANCE MATERIALS (RIFM) and are enforced by the IFRA Scientific Committee.

Evaluation of individual Fragrance ingredients is made according to the safety standards contained in the relevant section of the IFRA Code of Practice.

It is the ultimate responsibility of our customer to ensure the safety of the final product (containing this fragrance) by further testing if need be.

IFRA CONFORMITY CERTIFICATE

ANNEX: Definition of IFRA Classes

Finished product types	IFRA class
Lip Products of all types (solid and liquid lipsticks, balms, clear or colored, etc.); Children's Toys	IFRA Class 1 Limit
Deodorant and Antiperspirant Products of all types including any product with intended or reasonably foreseeable use on the axillae or labelled as such (spray, stick, roll-on, under-arm, deo-cologne and body spray, etc.); Nose pore strips; Fragranced Bracelets	IFRA Class 2 Limit
Hydroalcoholic Products Applied To Recently Shaved Skin (includes After Shave) (Edt range)	IFRA Class 3.A Limit
Hydroalcoholic Products Applied To Recently Shaved Skin (includes After Shave) (Fine fragrance range)	IFRA Class 3.B Limit
Eye Products of all types (eye shadow, mascara, eyeliner, eye make-up, etc.) including eye care; Men's Facial Creams and Balms; Baby Creams, Lotions, Oils; Body Paint for Children	IFRA Class 3.C Limit
Tampons	IFRA Class 3.D Limit
Hydroalcoholic Products applied to unshaved skin (includes aqueous based, alcoholic based and hydroalcoholic) like Cologne, eau de cologne, Eau de Parfum or Parfum (Edt range); Ingredients of Perfume Kits; Scent Pads, Foil packs; Scent Strips for hydroalcoholic products	IFRA Class 4.A Limit
Hydroalcoholic Products applied to unshaved skin (includes aqueous based, alcoholic based and hydroalcoholic) like Cologne, eau de cologne, Eau de Parfum or Parfum (Fine fragrance range)	IFRA Class 4.B Limit
Hair Styling Aids Sprays of all types (pumps, aerosol sprays, etc.); Body Creams, Oils, Lotions of all types (except baby creams, lotions and oils); Body sprays (including Body Mist) with no intended or reasonably foreseeable use on the axillae; Fragrance Compounds for Cosmetic Kits; Foot Care Products; Hair deodorant; Body Paint (except those for children)	IFRA Class 4.C Limit
Fragrancing Cream; Solid perfumes	IFRA Class 4.D Limit
Women's Facial Creams/Facial Make-up; Hand Cream; Hand sanitizers; Facial Masks; Baby Powder and Talc; Hair Permanent and other hair chemical treatments (e.g. relaxers) but not hair dyes; Wipes or Refreshing Tissues for Face, Neck, Hands, Body; Dry Shampoo or Waterless Shampoo	IFRA Class 5 Limit
Mouthwash, including Breath Sprays; Toothpaste	IFRA Class 6 Limit
Intimate Wipes; Baby Wipes	IFRA Class 7.A Limit
Insect Repellent (intended to be applied to the skin)	IFRA Class 7.B Limit
Make-up Removers of all types (not including face cleansers); Hair Styling Aids Non-Spray of all types (mousse, gels, leave-in conditioners etc...); Nail Care; All Powders & Talcs (including baby powders and talcs)	IFRA Class 8.A Limit
Hair Dyes	IFRA Class 8.B Limit
Conditioner (Rinse-Off); Liquid Soap; Shampoos of all types (including baby shampoos); Face Cleansers of all types (washes, gels, scrubs, etc.); Shaving Creams of all types (stick, gels, foams, etc.); All Depilatories (including waxes for mechanical hair removal); Body Washes of all types (including baby washes) and Shower Gels of all types; Bar Soap (Toilet Soap); Bath Gels, Foams, Mousses, Salts, Oils and Other Products added to bathwater	IFRA Class 9.A Limit
Feminine hygiene - pads, liners; Toilet paper; Wheat bags	IFRA Class 9.B Limit
Facial tissues; Napkins; Paper towels; 'Other' Aerosols (incl. air freshener sprays and air freshener pump sprays, but not deodorants / antiperspirants, hair styling aids spray and animal sprays)	IFRA Class 9.C Limit
Handwash Laundry Detergents of all types including concentrates; Fabric Softeners of all types including fabric softener sheets; Household Cleaning Products, Other Types (fabric cleaners, soft surface cleaners, carpet cleaners, etc.); Machine Wash Laundry Detergents (liquids, powders, tablets, etc.) including laundry bleach and concentrates; Hand Dishwashing Detergent including concentrates; Hard Surface Cleaners of all types (bathroom and kitchen cleansers, furniture polish, etc.); Shampoos for pets; Dry cleaning kits; Scented gloves, socks, tights with moisturizers	IFRA Class 10.A Limit
Diapers; Toilet seat wipes	IFRA Class 10.B Limit
All non-skin contact or incidental skin contact including: Candles; Air Fresheners and Fragrancing of all types (concentrated aerosol with metered doses (range 0.05-0.5mL/spray), plug-ins, solid substrate, membrane delivery, electrical); Air Delivery Systems; Cell phone cases; Pot pourri, powders, fragrancing sachets, liquid refills for air fresheners (non-cartridge systems), Reed diffusers; Liquid refills for air fresheners (cartridge systems); Shoe Polishes; Deodorizers/Maskers not intended for skin contact (e.g. fabric drying machine deodorizers, carpet powders); Insecticides (mosquito coil, paper, electrical, for clothing etc.) excluding aerosols; Scent delivery system using a dry air technology that releases a fragrance without sprays, aerosols or heated oils (technology of nebulization); Air freshening crystals; Toilet Blocks; Joss Sticks or Incense Sticks; Machine Dishwash Detergent and Deodorizers; Machine-only Laundry Detergent (e.g. liquid tabs); Plastic articles (excluding toys); Fuels; Fragranced lamp ring; Scent pack; Scratch and Sniff (sampling technology); Paints; Cat litter; Animal sprays (all types); Treatment products for textiles (e.g. starch sprays, fabric treated with fragrances after wash, deodorizers for textiles or fabrics); Floor wax; Odored Distilled Water (that can be added to steam irons)	IFRA Class 11 Limit

SAFETY DATA SHEET

In accordance with REACH Regulation EC No.1907/2006

Product: Cinnamon Leaf Oil

Version: 4

Section 1. Identification of the substance or the mixture and of the supplier

1.1 Product Identifier

Product identifier: Cinnamomum Zeylanicum; CAS: 84649-98-9; REACH REG: 01-2119487278-23

Other identifiers: Cinnamon Leaf Oil

1.2 Relevant identified uses of the substance of mixture and uses advised against

Product uses: For manufacturing purposes only.

1.3 Details of the supplier of the safety data sheet

Company name: MADAR Corporation Ltd

Company address: 19-20 Sandleheath Industrial Estate, Fordingbridge, Hampshire, SP6 1PA
UK

E-Mail address: sales@madarcorporation.co.uk

Approved sellers: Cosmetic Butter, Mystic Moments, New Directions, World of Moulds

Company phone: +44 (0) 1425 655555

1.4 Emergency telephone number

Office hours: +44 (0) 1425 655555

Section 2 Hazards identification

2.1 Classification of the substance or mixture

Classification under Regulation (EC) No 1272/2008

Class and category of danger: Eye Damage/ Irritation Category 2
Sensitization - Skin Category 1
Gem Cell Mutagenicity Category 2
Carcinogenicity Category 1B
Hazardous to the Aquatic Environment - Long-term Hazard Category 3
H317, May cause an allergic skin reaction.
H319, Causes serious eye irritation.
H341, Suspected of causing genetic defects (exposure route).
H350, May cause cancer (exposure route).
H412, Harmful to aquatic life with long lasting effects.

2.2 Label elements

Classification under Regulation (EC) No 1272/2008

Signal word: Danger

SAFETY DATA SHEET

In accordance with REACH Regulation EC No.1907/2006

Product: Cinnamon Leaf Oil

Version: 4

Hazard statements: H317, May cause an allergic skin reaction.
 H319, Causes serious eye irritation.
 H341, Suspected of causing genetic defects (exposure route).
 H350, May cause cancer (exposure route).
 H412, Harmful to aquatic life with long lasting effects.

M factor: None

Supplemental Information: None

Precautionary statements: P202, Do not handle until all safety precautions have been read and understood.
 P261, Avoid breathing vapour or dust.
 P264, Wash hands and other contacted skin thoroughly after handling.
 P272, Contaminated work clothing should not be allowed out of the workplace.
 P273, Avoid release to the environment.
 P280, Wear protective gloves/eye protection/face protection.
 P302/352, **F ON SKIN:** Wash with plenty of soap and water.
 P305/351/338, **F N EYES:** Rinse cautiously with water for several minutes. Remove contact lenses, if present and easy to do. Continue rinsing.
 P308/313, **F exposed or concerned:** Get medical advice/attention.
 P333/313, If skin irritation or rash occurs: Get medical advice/attention.
 P337/313, If eye irritation persists: Get medical advice/attention.
 P363, Wash contaminated clothing before reuse.
 P405, Store locked up.
 P501, Dispose of contents/container to approved disposal site, in accordance with local regulations.

Pictograms:



Other hazards: None

Section 3 Composition/ information on ingredients

3.1 Substances

Product identifier: Cinnamomum Zeylanicum; CAS: 84649-98-9; REACH REG: 01-2119487278-23

Contains:

Name	CAS	EC	REACH Registration No.	%	Classification for (CLP 1272/2008)

SAFETY DATA SHEET

In accordance with REACH Regulation EC No.1907/2006

Product: Cinnamon Leaf Oil

Version: 4

Eugenol	97-53-0	202-589-1	50-100%	ED1 2-SS 1B;H317-H319 -
Linalool	78-70-6	201-134-4	1-<5%	SCI 2-EDI 2-SS 1B;H315-H317-H319-
Benzyl Benzoate	120-51-4	204-402-9 01-2119976371-33	1-<5%	ATO 4-EH A1-EH C2;H302-H400-H411 -
Cinnamal	104-55-2	203-213-9	1-<5%	ATD 4-SCI 2-EDI 2-SS 1;H312-H315-H317-H319-
Safrole	94-59-7	202-345-4	1-<5%	ATO 4-MUT 2-CAR 1B;H302-H341-H350-
Cinnamyl Alcohol	104-54-1	203-212-3	1-<5%	SS 1B;H317,-

Substances with Community workplace exposure limits:

Name	CAS	EC	%
Benzyl Benzoate	120-51-4	204-402-9	1-<5%

Section 4. First-aid measures

4.1 Description of first aid measures

F ON SKIN: Wash with plenty of soap and water.

F N EYES: Rinse cautiously with water for several minutes. Remove contact lenses, if present and easy to do. Continue rinsing.

F exposed or concerned: Get medical advice/attention.

4.2 Most important symptoms and effects, both acute and delayed

May cause an allergic skin reaction.

Causes serious eye irritation.

Suspected of causing genetic defects (exposure route).

May cause cancer (exposure route).

4.3 Indication of any immediate medical attention and special treatment needed

None expected, see Section 4.1 for further information.

SECTION 5: Firefighting measures

5.1 Extinguishing media

Suitable media: Carbon dioxide, Dry chemical, Foam.

5.2 Special hazards arising from the substance or mixture

In case of fire, may be liberated: Carbon monoxide, Unidentified organic compounds.

5.3 Advice for fire fighters:

In case of insufficient ventilation, wear suitable respiratory equipment.

SAFETY DATA SHEET

In accordance with REACH Regulation EC No.1907/2006

Product: Cinnamon Leaf Oil

Version: 4

Section 6. Accidental release measures

6.1 Personal precautions, protective equipment and emergency procedures:

Avoid inhalation. Avoid contact with skin and eyes. See protective measures under Section 7 and 8.

6.2 Environmental precautions:

Keep away from drains, surface and ground water, and soil.

6.3 Methods and material for containment and cleaning up:

Remove ignition sources. Provide adequate ventilation. Avoid excessive inhalation of vapours. Contain spillage immediately by use of sand or inert powder. Dispose of according to local regulations.

6.4 Reference to other sections:

Also refer to sections 8 and 13.

Section 7. Handling and storage

7.1 Precautions for safe handling:

Keep away from heat, sparks, open flames and hot surfaces. - No smoking. Use personal protective equipment as required. Use in accordance with good manufacturing and industrial hygiene practices. Use in areas with adequate ventilation. Do not eat, drink or smoke when using this product.

7.2 Conditions for safe storage, including any incompatibilities:

Store in a well-ventilated place. Keep container tightly closed. Keep cool. Ground/bond container and receiving equipment. Use explosion-proof electrical, ventilating and lighting equipment. Use only non-sparking tools. Take precautionary measures against static discharge.

7.3 Specific end use(s):

Use in accordance with good manufacturing and industrial hygiene practices.

Section 8 Exposure controls/personal protection

8.1 Control parameters

Workplace exposure limits:

Ingredient	CAS	EC	Description	Value
Benzyl Benzoate	120-51-4	204-402-9	UK WEL Long term mgm3	5.1 mg/m ³
			UK WEL Short term mgm3	102 mg/m ³
			Long-term exposure limit (8-hour TWA) (mg/m3)	2.6

SAFETY DATA SHEET

In accordance with REACH Regulation EC No.1907/2006

Product: Cinnamon Leaf Oil

Version: 4

8.2 Exposure Controls

Eye / Skin Protection

Wear protective gloves/eye protection/face protection

Respiratory Protection

Ensure adequate and ongoing ventilation is maintained in order to prevent build up of excessive vapour and to ensure occupational exposure limits are adhered to. If appropriate, and depending on your patterns and volumes of use, the following engineering controls may be required as additional protective measures: a) Isolate mixing rooms and other areas where this material is used or openly handled. Maintain these areas under negative air pressure relative to the rest of the plant. b) Employ the use of Personal protective equipment - an approved, properly fitted respirator with organic vapour cartridges or canisters and particulate filters. c) Use local exhaust ventilation around open tanks and other open sources of potential exposures in order to avoid excessive inhalation, including places where this material is openly weighed or measured. In addition, use general dilution ventilation of the work area to eliminate or reduce possible worker exposures. d) Use closed systems for transferring and processing this material.

Also refer to Sections 2 and 7.

Section 9. Physical and chemical properties

9.1 Information on basic physical and chemical properties

Appearance:	Reddish Brown Liquid
Odour:	Characteristic
Odour threshold:	Not determined
pH:	Not determined
Melting point/ freezing point:	Not determined
Initial boiling point/ range:	Not determined
Flash point:	88 °C
Evaporation rate:	Not determined
Flammability (solid, gas):	Not determined
Upper/lower flammability or explosive limits:	Product does not present an explosion hazard
Vapour pressure:	Not determined
Vapour density:	Not determined
Relative density:	1.0330 - 1.0490
Solubility(ies):	Not determined
Partition coefficient: n-octanol/water:	Not determined
Auto-ignition temperature:	Not determined
Decomposition temperature:	Not determined
Viscosity:	Not determined
Explosive properties:	Not expected
Oxidising properties:	Not expected

9.2 Other information: None available

SAFETY DATA SHEET

In accordance with REACH Regulation EC No.1907/2006

Product: Cinnamon Leaf Oil

Version: 4

Section 10. Stability and reactivity

10.1 Reactivity:

Presents no significant reactivity hazard, by itself or in contact with water.

10.2 Chemical stability:

Good stability under normal storage conditions.

10.3 Possibility of hazardous reactions:

Not expected under normal conditions of use.

10.4 Conditions to avoid:

Avoid extreme heat.

10.5 Incompatible materials:

Avoid contact with strong acids, alkalis or oxidising agents.

10.6 Hazardous decomposition products:

Not expected.

Section 11. Toxicological information

11.1 Information on toxicological effects

Acute Toxicity:	Based on available data the classification criteria are not met.
Acute Toxicity Oral	2316
Acute Toxicity Dermal	>5000
Acute Toxicity Inhalation	Not Available
Skin corrosion/irritation:	Based on available data the classification criteria are not met.
Serious eye damage/irritation:	Eye Damage / Irritation Category 2
Respiratory or skin sensitisation:	Sensitization - Skin Category 1
Germ cell mutagenicity:	Germ Cell Mutagenicity Category 2
Carcinogenicity:	Carcinogenicity Category 1B
Reproductive toxicity:	Based on available data the classification criteria are not met.
\$TOT-single exposure:	Based on available data the classification criteria are not met.
STOT-repeated exposure:	Based on available data the classification criteria are not met.
Aspiration hazard:	Based on available data the classification criteria are not met.

Information about hazardous ingredients in the mixture

Ingredient	CAS	EC	LD50/ATE Oral	LOSO/ATE Dermal	LC50/ATE Inhalation	LC50 Route
Benzyl Benzoate	120-51-4	204-402-9	1500	4000	Not available	Not available
Cinnamal	104-55-2	203-213-9	2500	1100	Not available	Not available

SAFETY DATA SHEET

in accordance with REACH Regulation EC No.1907/2006

Product: Cinnamon Leaf Oil

Version: 4

Safrole	94-59-7	202-345-4	1950	Not available	Not available	Not available
---------	---------	-----------	------	---------------	---------------	---------------

Refer to Sections 2 and 3 for additional information.

Section 12. Ecological information

12.1 Toxicity:

Harmful to aquatic life with long lasting effects.

12.2 Persistence and degradability: Not available

12.3 Bioaccumulative potential: Not available

12.4 Mobility in soil: Not available

12.5 Results of PBT and vPvB assessment:

This substance does not meet the PBT/vPvB criteria of REACH, annex XIII.

12.6 Other adverse effects:

This material contains *% Volatile Organic Compounds. : 0.2 %

Section 13. Disposal considerations

13.1 Waste treatment methods:

Dispose of in accordance with local regulations. Avoid disposing into drainage systems and into the environment. Empty containers should be taken to an approved waste handling site for recycling or disposal.

Section 14. Transport information

14.1 UN number: Not classified

14.2 UN Proper Shipping Name: Not classified

14.3 Transport hazard class(es): Not classified

Sub Risk: Not classified

14.4. Packing Group: Not classified

14.5 Environmental hazards: Not environmentally hazardous for transport

14.6 Special precautions for user: None additional

14.7 Transport in bulk according to Annex I of MARPOL73/78 and the IBC Code:

Not classified

Section 15. Regulatory information

15.1 Safety, health and environmental regulations/legislation specific for the substance or mixture

Water Hazard Class (WGK): 2

SAFETY DATA SHEET

In accordance with REACH Regulation EC No.1907/2006

Product: Cinnamon Leaf Oil

Version: 4

15.2 Chemical Safety Assessment

A Chemical Safety Assessment has not been carried out for this product.

Section 16. Other information

Concentration % Limits: EH C3=83.33% EDI 2=10.87% SS 1=1.18% MUT 2=50.00% CAR 18=5.00%

Total Fractional Values: EH C3=1.20 EDI 2=9.20 SS 1=85.00 MUT 2=2.00 CAR 18=20.00

Key to revisions:

Information about hazardous ingredients in the mixture

SECTION 3 Composition/information on ingredients

Workplace exposure limits

Key to abbreviations:

Abbreviation	Meaning
ATD4	Acute Toxicity - Dermal Category 4
ATO4	Acute Toxicity - Oral Category 4
CAR1B	Carcinogenicity Category 1B
EDI2	Eye Damage/ Irritation Category 2
EHA1	Hazardous to the Aquatic Environment - Acute Hazard Category 1
EH C2	Hazardous to the Aquatic Environment - Long-term Hazard Category 2
H302	Harmful if swallowed.
H312	Harmful in contact with skin.
H315	Causes skin irritation.
H317	May cause an allergic skin reaction.
H319	Causes serious eye irritation.
H341	Suspected of causing genetic defects (exposure route).
H350	May cause cancer (exposure route).
H400	Very toxic to aquatic life.
H411	Toxic to aquatic life with long lasting effects.
MUT2	Germ Cell Mutagenicity Category 2
P202	Do not handle until all safety precautions have been read and understood.
P261	Avoid breathing vapour or dust.
P264	Wash hands and other contacted skin thoroughly after handling.
P270	Do not eat, drink or smoke when using this product.
P272	Contaminated work clothing should not be allowed out of the workplace.
P273	Avoid release to the environment.
P280	Wear protective gloves/eye protection/face protection.
P281	Use personal protective equipment as required.
P301/312	F SWALLOWED: call a POISON CENTER or doctor/physician if you feel unwell.
P302/352	F ON SKIN: Wash with plenty of soap and water.

SAFETY DATA SHEET

In accordance with REACH Regulation EC No.1907/2006

Product: Cinnamon Leaf Oil

Version: 4

P305/351 /338	F N EYES: Rinse cautiously with water for several minutes. Remove contact lenses, if present and easy to do. Continue rinsing.
P308/313	F exposed or concerned: Get medical advice/attention.
P312	Call a POISON CENTRE or doctor/physician if you feel unwell.
P330	Rinse mouth.
P333/313	If skin irritation or rash occurs: Get medical advice/attention.
P337/313	If eye irritation persists: Get medical advice/attention.
P362	Take off contaminated clothing and wash before reuse.
P363	Wash contaminated clothing before reuse.
P391	Collect spillage.
P405	Store locked up.
P501	Dispose of contents/container to approved disposal site, in accordance with local regulations.
SCI 2	Skin Corrosion/ Irritation Category 2
SS 1	Sensitization - Skin Category 1
SS1B	Sensitization - Skin Category 1B

The information in this safety data sheet is to the best of our knowledge true and accurate but all data, instructions, recommendations and/or suggestions are made without guarantee.

SPECIFICATION

PRODUCT: CINNAMON LEAF OIL 100% PURE & NATURAL

GENERAL DATA

Odour: CHARACTERISTIC
Appearance: STRAW TO BRIGHT AMBER TO REDDISH BROWN LIQUID
Country of Origin: SRI LANKA

ANALYTICAL DATA

Flash Point: 88 °C
Flash Point (Fahrenheit): 190 °F
Specific Gravity @ 20°C: 1.0330 - 1.0490
Refractive Index @ 20°C: 1.5270 - 1.5365
GC: Match Standard
Optical Rotation @ 20°C: -2.5 To 2.0 degrees
Iron: ≤ 10
Peroxide: ≤ 20 mmol/litre
Colour L - 10 cell neat: 82.00 - 96.00
Colour a - 10 cell neat: -9.00 - -1.50
Colour b - 10 cell neat: -26.00 -44.00
Optical Rotation: -2.5000 - 2.0000

STORAGE AND HANDLING

STORAGE: Store in well-sealed containers in cool, dry, dark place. Ideal temperature between 15-25°C (59-77°F). It is not recommended to store this material below 10°C or above 25°C.



Vegetarian & Vegan Suitability Statement

PRODUCT NAME: **Cinnamon Leaf Oil**

MADAR Corporation Limited can confirm that the above listed product does not contain dairy or any other animal product, by product or derivative and is therefore suitable for vegetarian and vegan use.